



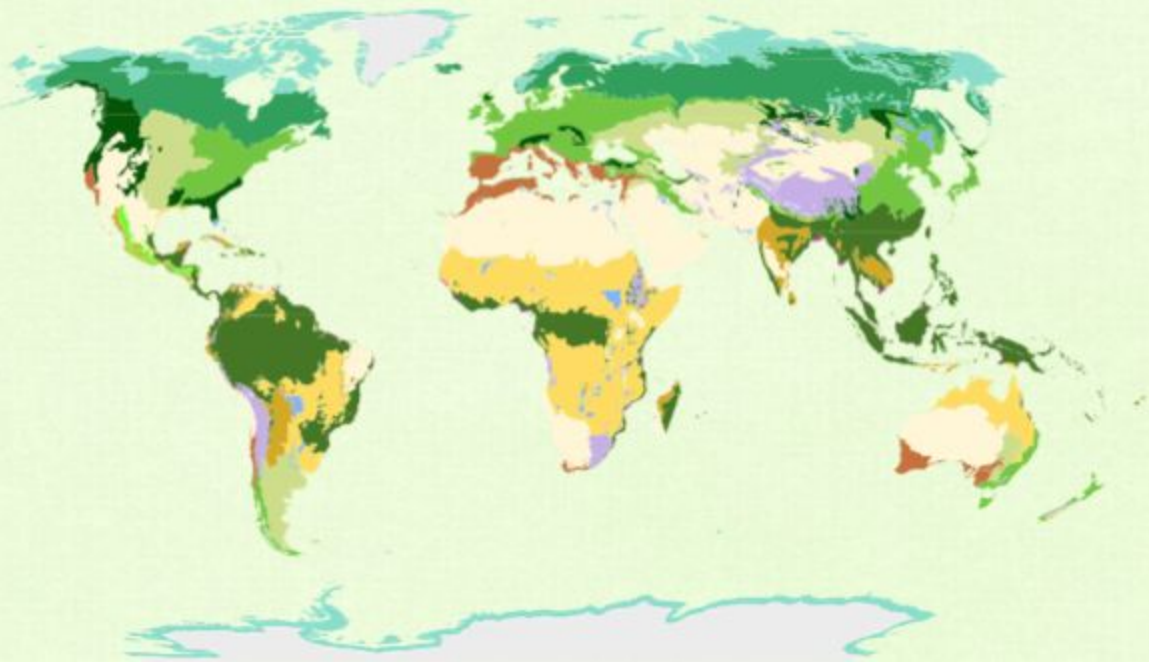
Biomes



What is a Biome?

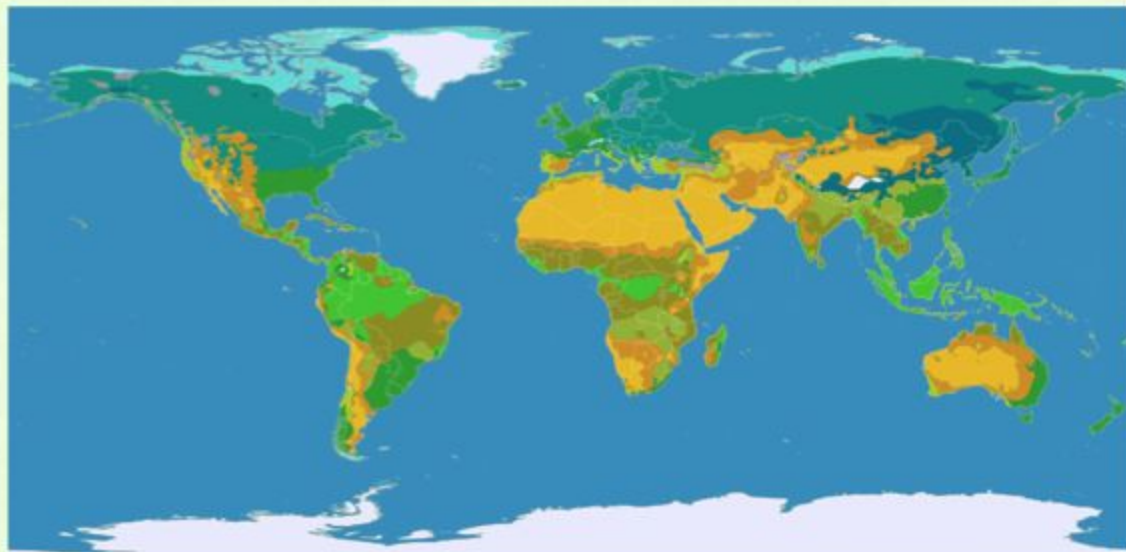
Our world is divided into large areas of similar ecosystems that we call biomes. Biomes have similar weather, rainfall, animals, and plants. There are biomes in dry land and in water. Every part of earth's surface is included in one or more biomes.

- Desert
- Temperate Forest
- Savannah
- Rainforest
- Tundra
- Taiga
- Grassland
- Mediterranean



Desert: Location

The largest hot and dry desert in the world is the Sahara desert in northern Africa but Antarctica is the largest desert in the world. Other major deserts include the Arabian desert in the middle east, the Gobi desert in northern China and Mongolia, and the Kalahari desert in Africa.



Desert: Weather

Most deserts get really hot during the day and then cold during the night because of low humidity. During the day, the temperatures can reach over 100 degrees F and then drop below freezing during the night. The coldest day in Antarctica was -113 degrees F. During winter, deserts get a little rainfall but sometimes the rain evaporates before it hits the ground.



The Cold Desert: Antarctica!



Desert: Plants

Certain types of plants can survive the harsh environment of the desert. They have to be good at storing and finding water to adapt to minimal rainfall. Plants you can find in deserts include: cacti, creosote bush, sagebrush, and ocotillo.



Cacti



Creosote bush



Sagebrush



Ocotillo

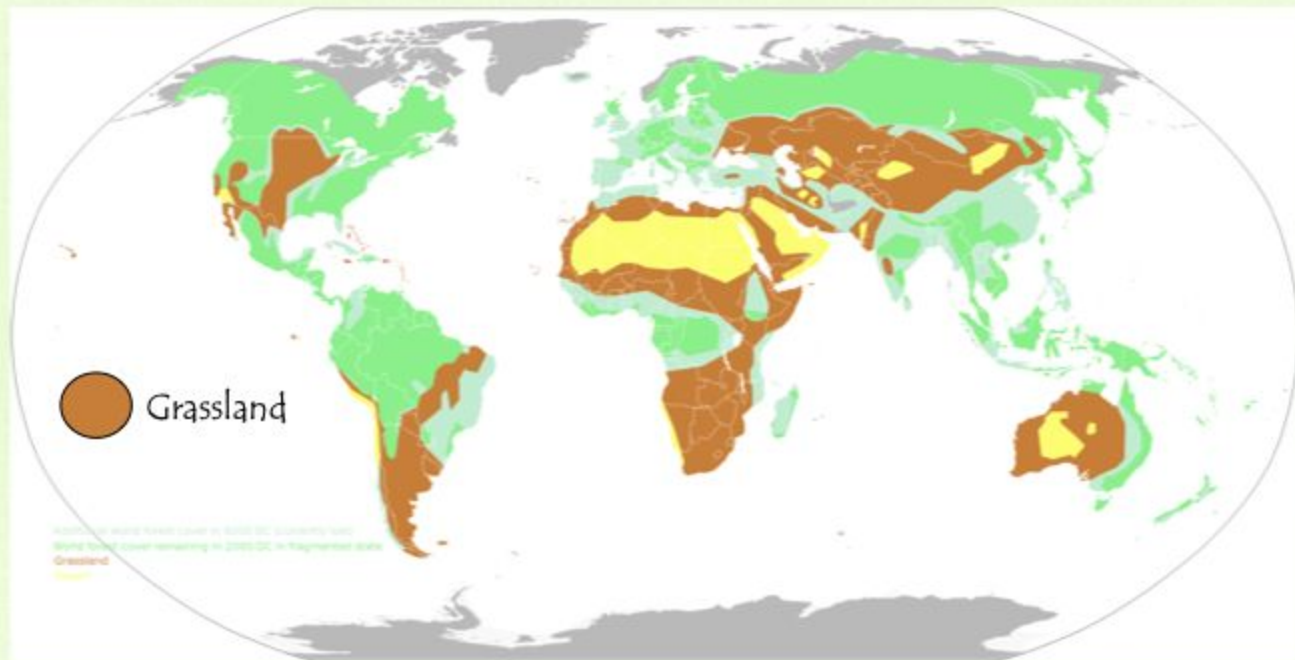
Desert: Animals

Some animals that live in the desert are cold blooded such as snakes, insects, and lizards. The mammals that live here are small such as the kangaroo rat and kit fox. The elf owl sometimes live inside a cactus during the day and then come out to hunt during the night.



Grassland: Location

Grasslands are located between deserts and forests: Central North America, Uruguay, Argentina, southern Russia, and Mongolia.



Grassland: Weather

Summers are hot and winters are cold in grasslands. It usually rains in the late spring and early summer but not enough rain to grow tall trees and make a forest.



Grassland: Plants

Grasslands are ruled by grass. You will not find many trees and shrubs in this biome. Grasslands are home to many different kinds of grass including purple needle grass, wild oats, foxtail, ryegrass, and buffalo grass.



Oats



Foxtail



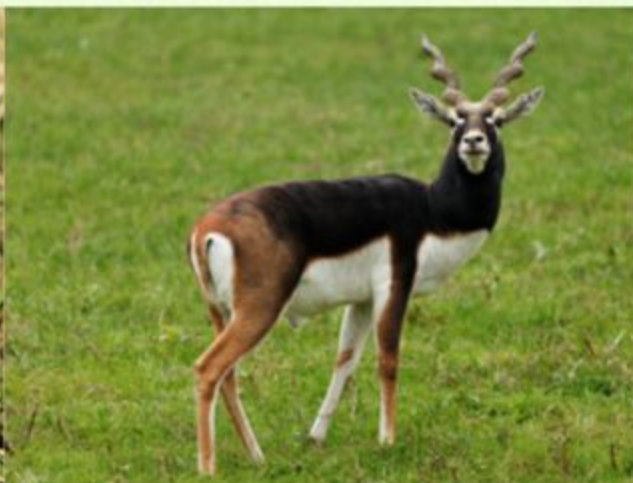
Buffalo Grass

Grassland: Animals

The main vertebrates you will find in grasslands are herbivores and plant eating grazers called ungulates. Some animals you can find in this biome include birds, gophers, antelope, prairie dogs, coyotes, bison, and insects.



Gophers



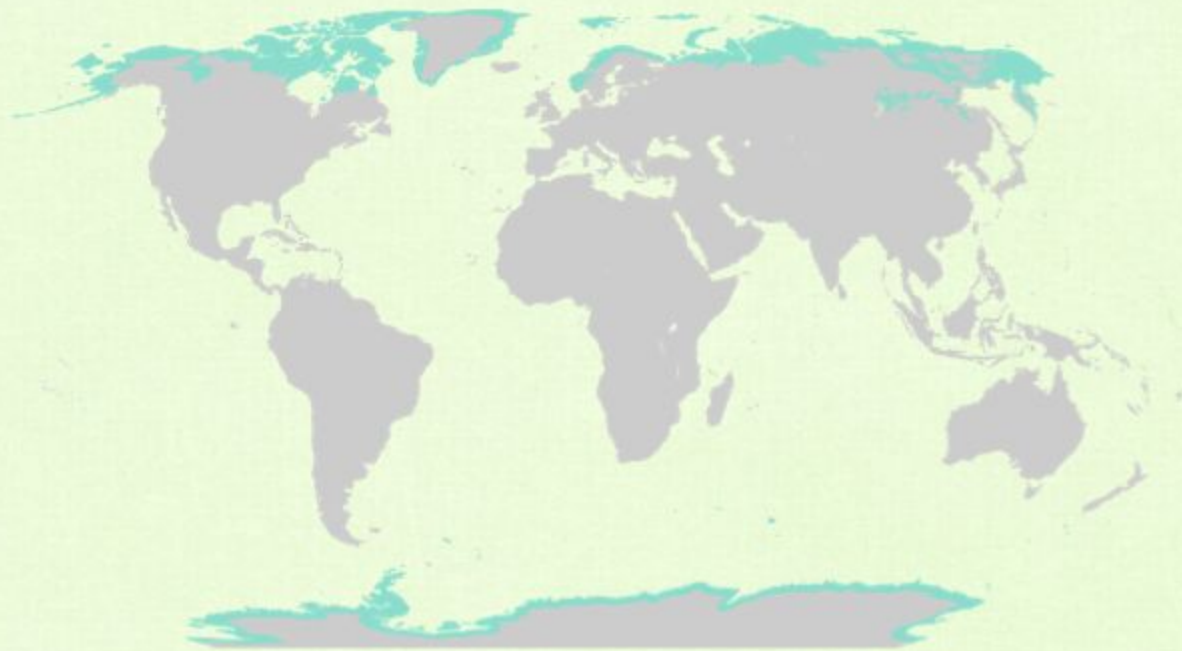
Antelope



Bison

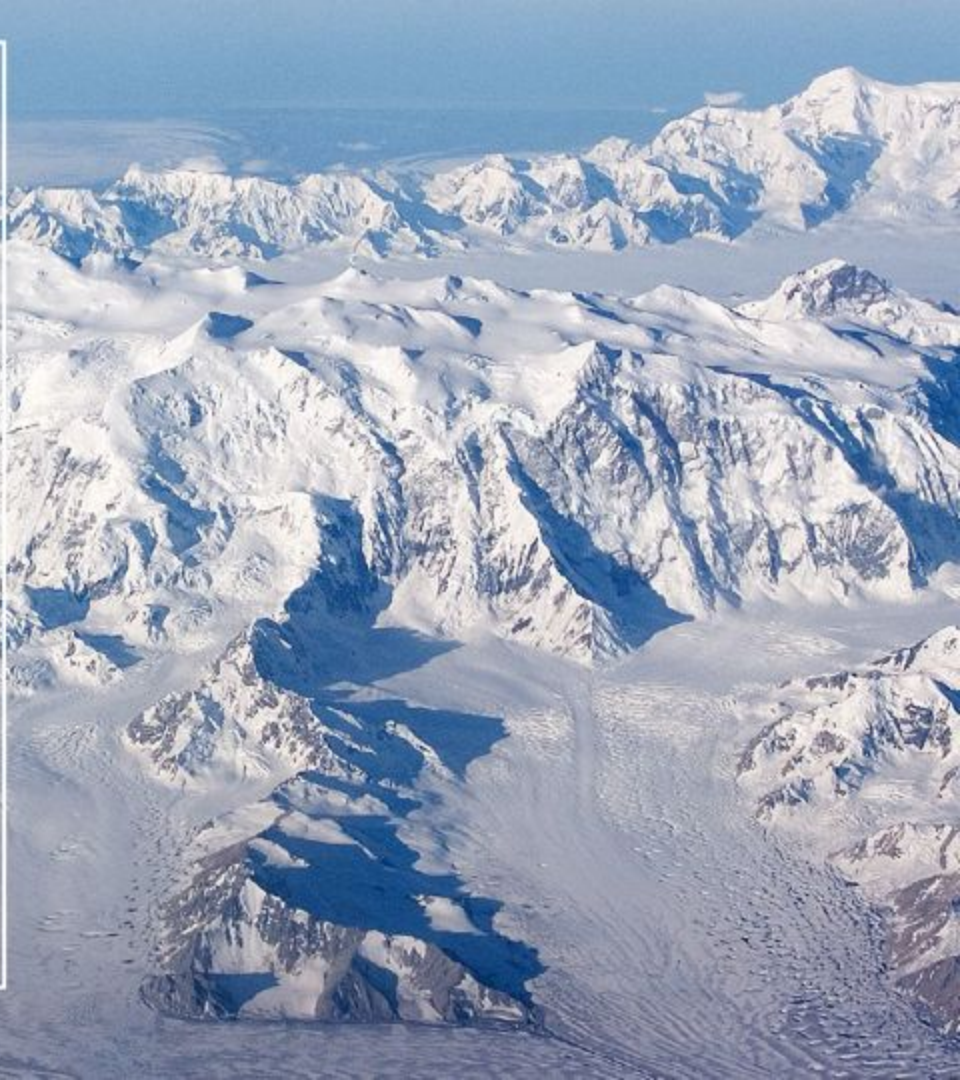
Tundra: Location

The tundra covers 1/5 of the land on earth. The tundra surrounds the North pole and Antarctica.



Tundra: Weather

- The tundra biome is the coldest and the driest weather of all biomes. It does not rain as much, the winters are long, and the summers are short. The winter lasts 8 months and reaches a temperature of -60 degrees F. In the summer the temperatures will reach 50 degrees F which is just enough to thaw the surface of the ground.



Tundra: Plants

Because of the extreme cold weather, there are no trees in this biome. Plants that do grow in this biome include grasses, shrubs, herbs, lichens, and mosses. They grow in groups and stay low in the ground to stay protected from icy winds.



Tundra: Animals

There are a few types of animals that actually live in this extremely cold biome but mostly migrate south for the winter. Animals you can find in this biome are lemmings, caribou, arctic fox, and the largest and most dangerous animal is the polar bear.

