

# MONDAY

## Patterning and Algebra

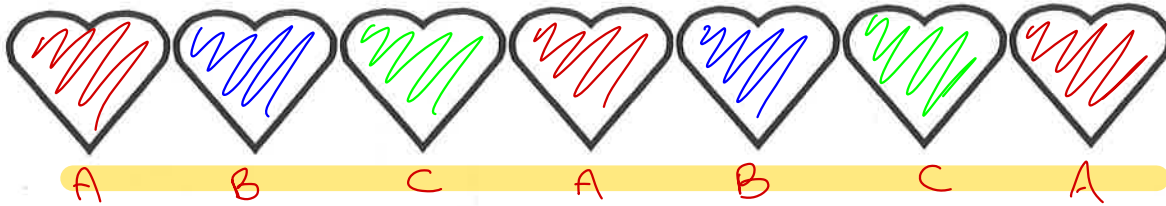
1. What is the missing number?

$$\underline{10} - 4 = 6$$

2. What is the next number if the pattern rule is **add 3**?

$$4, \overset{+3}{\underline{7}}$$

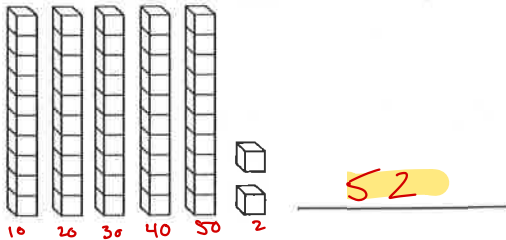
3. Colour an ABC pattern.



# TUESDAY

## Number Sense

1. What is the number?



2. List the numbers from **greatest to least**.

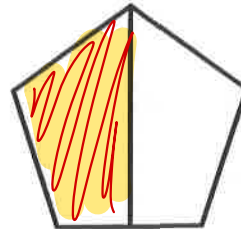
73, 21, 17

73, 21, 17

3. Write the numeral.

eleven 11

4. Colour  $\frac{1}{2}$  of the shape.



# WEDNESDAY

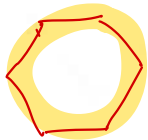
## Geometry and Spatial Sense

1. Colour the figures that are the **same size and shape**.



2. Draw a **hexagon**.

6 sides



3. What shape is **above** the **square**?



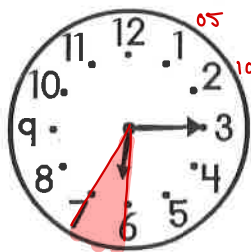
A. triangle

B. square

# THURSDAY

## Measurement

1. Write the time in two ways.



6 : 15

quarter past 6

2. What month of the year comes just before June?

A. March B. July C. May

3. Is the temperature **hot** or **cold**?



A. hot

B. cold

4. Measure the length of the line.

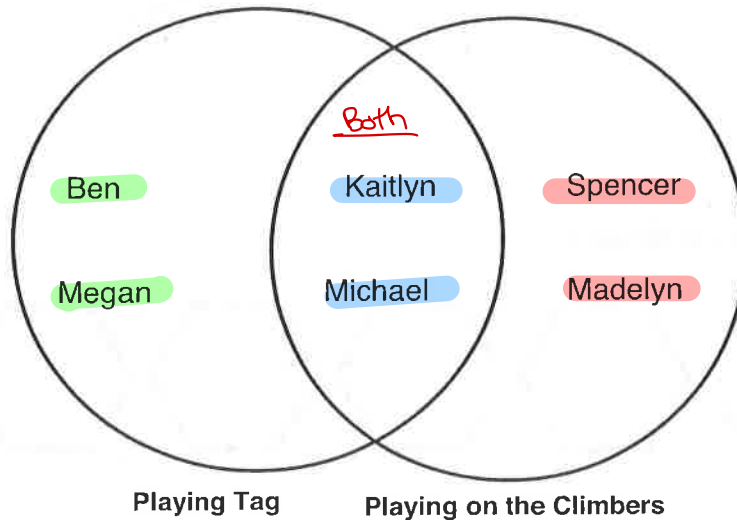


It is about 9 long.

# FRIDAY Data Management

Use the Venn Diagram to answer the questions about these students' favourite recess activities.

Favourite Recess Activities



1. Which students like to play tag, but not play on the climbers?

Ben + Megan

2. Which students like to play on the climbers, but not play tag?

Spencer + Madelyn

3. Which students like to do both activities?

Kaitlyn + Michael

## BRAIN STRETCH



$$\begin{array}{r} 1. \quad 45 \\ + 39 \\ \hline 84 \end{array}$$

$$\begin{array}{r} 2. \quad 61 \\ + 29 \\ \hline 90 \end{array}$$

$$\begin{array}{r} 3. \quad 70 \\ - 44 \\ \hline 26 \end{array}$$

$$\begin{array}{r} 4. \quad 35 \\ - 19 \\ \hline 16 \end{array}$$