

MONDAY



Patterning and Algebra

1. What is the missing number? 2. What is the next number if the pattern rule is **add 10**?

$$\underline{10} - 6 = 4$$

$$26, \underline{36}$$

+10

3. Make a pattern using  and .

Answers will vary



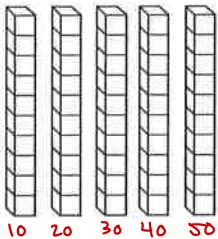
What is your pattern rule? ABB



TUESDAY

Number Sense

1. What is the number?



50

2. List the numbers from **least to greatest**.

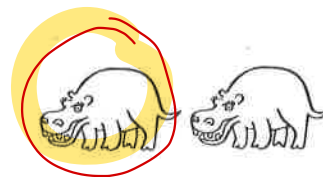
11, 55, 32

11, 32, 55

3. How many tens and ones in 63?

tens 6 ones 3

4. Circle $\frac{1}{2}$ of the group.

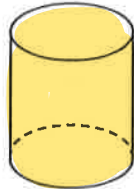
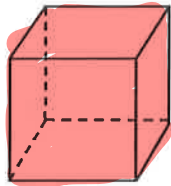


WEDNESDAY

Geometry and Spatial Sense

1. Colour the **cube** red.

Colour the **cone** green.



2. What is the name of this 3D figure?



A. cone

B. pyramid

3. What shape is **under** the **circle**?



A. octagon

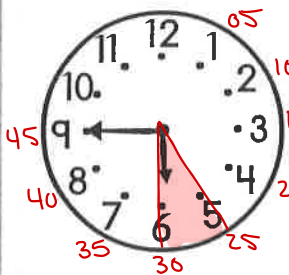


B. rectangle

THURSDAY

Measurement

1. Write the time in two ways.



5 : 45

quarter to 6

2. Circle the best measurement tool to find the length of a book.



A.



B.



2. How many months in 2 years?

2×12 months

24

months

4. Measure the length of the line.



It is about

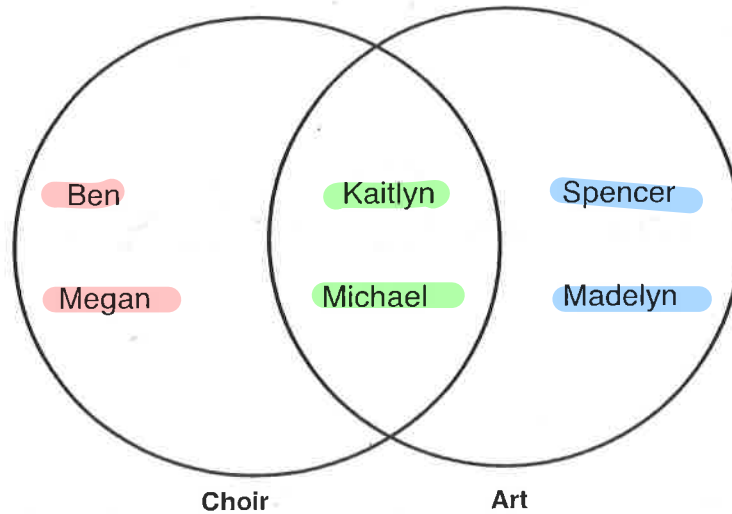
10



long.

Use the Venn Diagram to answer the questions about these students' favourite school clubs.

Favourite School Clubs



1. Which students are in choir, but not the art club?

Ben + Megan

2. Which students are in the art club, but are not in choir?

Spencer + Madelyn

3. How many children are in both clubs?

2 (Kaitlyn + Michael)



BRAIN STRETCH



$$\begin{array}{r} 1. \quad 22 \\ + 19 \\ \hline 41 \end{array}$$

$$\begin{array}{r} 2. \quad 58 \\ + 14 \\ \hline 72 \end{array}$$

$$\begin{array}{r} 3. \quad 65 \\ - 18 \\ \hline 47 \end{array}$$

$$\begin{array}{r} 4. \quad 72 \\ - 31 \\ \hline 41 \end{array}$$