

MONDAY



Patterning and Algebra

1. What is the missing number?

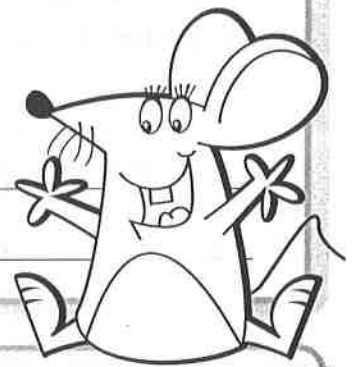
$$\underline{\quad} + 10 = 13$$

2. What is the next number if the pattern rule is **subtract 4**?

19, $\underline{\quad}$

3. Make a pattern using  and .

What is your pattern rule? $\underline{\hspace{2cm}}$



TUESDAY

Number Sense

1. Find the missing sign.

$$51 \bigcirc 90$$

A. < B. = C. >

2. List the numbers from **least to greatest**.

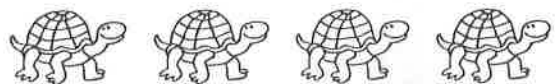
76, 62, 89

$\underline{\hspace{1cm}}$, $\underline{\hspace{1cm}}$, $\underline{\hspace{1cm}}$

3. How many tens and ones in 76?

tens $\underline{\hspace{1cm}}$ ones $\underline{\hspace{1cm}}$

4. Circle $\frac{1}{4}$ of the group.



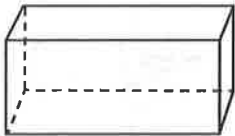
WEDNESDAY

Geometry and Spatial Sense

1. Colour the shapes with **more than 5 corners** red.

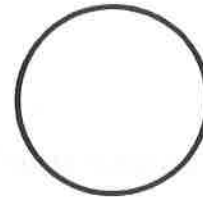


2. Can this 3D figure be stacked?



- A. yes
- B. no

3. Draw a line of symmetry on the shape.



THURSDAY

Measurement

1. Write the time in two ways.



_____ : _____

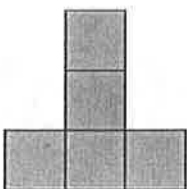
quarter past _____

2. Measure the length of the line.



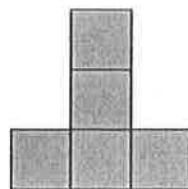
It is about _____  long.

3. What is the **perimeter**?



_____ units

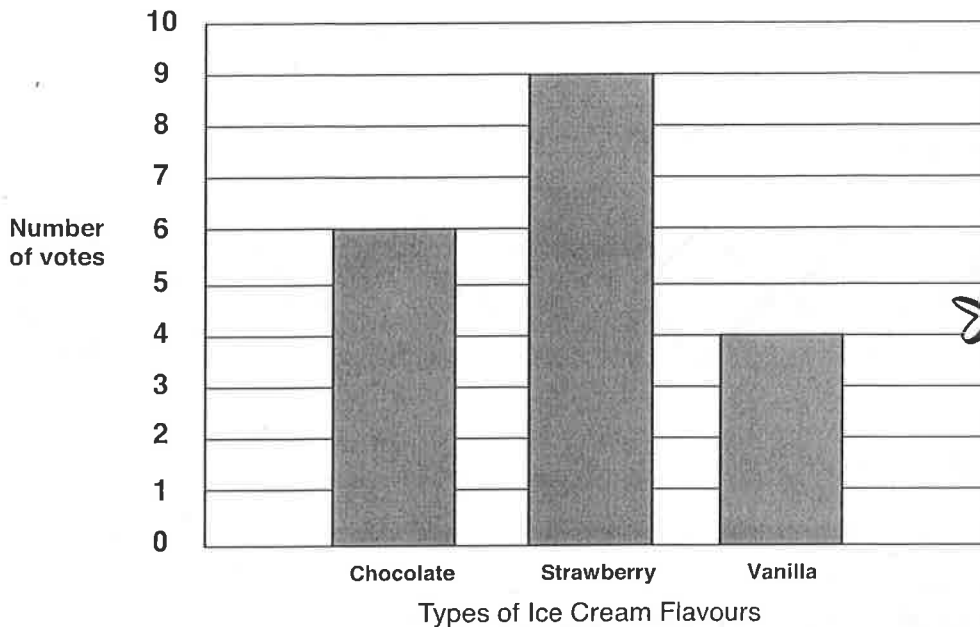
4. What is the **area**?



_____ square units

Here are the results of a Favourite Ice Cream Survey.
Answer the questions using the information from the bar graph.

Favourite Ice Cream Flavour Graph



1. What is this graph about? _____
2. How many votes did chocolate get? _____
3. Which flavour was the **most** popular? _____
4. Which flavour was the **least** popular? _____

BRAIN STRETCH



There were 37 frogs at the pond. 19 frogs jumped away.
How many frogs were left?