

MONDAY

Patterning and Algebra

1. Are these differences equal?

$$\begin{array}{r} 65 - 12 < 77 - 21 \\ 53 \quad 56 \\ \text{No} \end{array}$$

2. Make this statement true:

$$33 + \underline{7} = 50 - 10 = 40$$

3. Complete the pattern:

$$5, 13, 21, 29, \underline{37}, \underline{45}, \underline{53}$$

+8

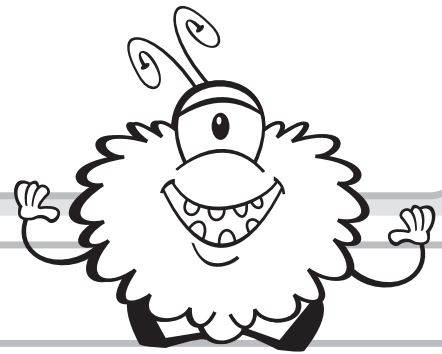
4. What is the missing number?

$$\boxed{9} \times 100 = 900$$

5. Show the first five numbers of this pattern:

start at 60, subtract 7

$$60, 53, 46, 39, 32, 25$$



TUESDAY

Number Sense

1. Arrange these digits to make the smallest possible number.

$$6 \ 9 \ 2 \ 4 \quad \underline{2469}$$

2. Write \$43.89 in words.

forty-three dollars
and eighty-nine
cents

3. What is the following decimal as a fraction?

$$0.67 \quad \frac{67}{100}$$

4. What is the sum of 4.2 and 5.9?

$$\begin{array}{r} 4.2 \\ + 5.9 \\ \hline 10.1 \end{array}$$

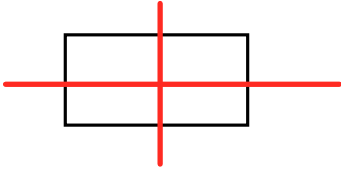
5. Sam has eighty-one trading cards. He has twelve more than John. How many cards does John have?

$$\begin{array}{r} 81 \\ - 12 \\ \hline 69 \text{ cards} \end{array}$$

WEDNESDAY

Geometry and Spatial Sense

1. Draw two lines of symmetry on this shape.



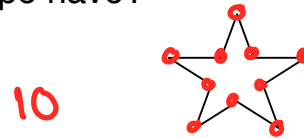
2. How many sides of equal length does a square have?



3. Draw a set of parallel lines.



4. How many vertices does this shape have?



5. A soda can is what kind of 3D figure?

- A. cube
B. cone
C. cylinder

THURSDAY

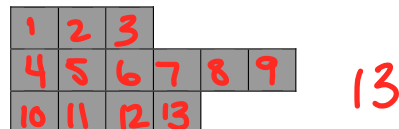
Measurement

1. 2 years = 730 days

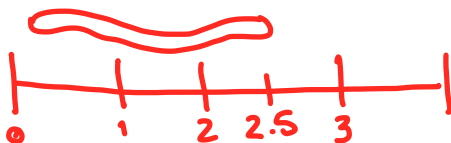
1 year = 365 days

$$\begin{array}{r} 365 \\ \times 2 \\ \hline 730 \end{array}$$

2. Find the area of this shape:



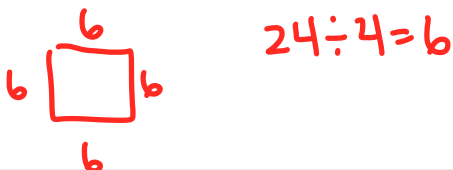
3. Draw a worm that is 25 mm long.



4. Compare the following using: $>$, $<$ or $=$

11 minutes $>$ 200 seconds
660s $>$ 3m 20s

5. Draw a square with a perimeter of 24 units.



Students at Orchard Park Public School can choose any event to participate in during the school's annual Spring Field Day. Here are some of the choices:

Standing Long Jump	45 students
High Jump	14 students
Shot Put	31 students
Running Long Jump	38 students
100 m Sprint	60 students
1500 m Run	38 students

226
total

1. How many students were surveyed?

226

2. What was the most popular event?

100m Sprint

3. What was the least popular event?

High Jump

4. How many students chose either shot put or 100 m sprint?

$60 + 31 = 91$

5. What is the range of the data?

$60 - 14 = 46$

**BRAIN STRETCH**

Sophie's favourite CD has 10 songs on it. Its total length is 39 minutes. On average, how many minutes was each song?

$39 \div 10 = 3.9$ minutes