

# MONDAY

## Patterning and Algebra

1. What will be the 14<sup>th</sup> animal in the pattern?      2. Complete the pattern:



99, 94, 89, 84, \_\_\_\_\_, \_\_\_\_\_

3. Write the first three numbers for this pattern rule:

start at 600, add 17

4. What is the rule for the following pattern?

246, 241, 236, 231, 226, 221

5.  $46 \div b = 23$

$b =$  \_\_\_\_\_



# TUESDAY

## Number Sense

1. Subtract:  $110 - 78.1$

2. Multiply:  $1.45 \times 1000$

3. Put the following in order from greatest to least:

$1 \frac{1}{2}$ ,  $1 \frac{1}{4}$ ,  $1 \frac{3}{4}$

4. Round this number to the nearest tenth.

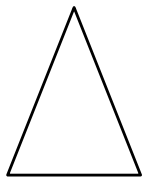
6900.65

5. Sunita reads about 5 books a month. How many books does she read in a year?

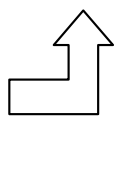
# WEDNESDAY

## Geometry

1. What kind of triangle is this?



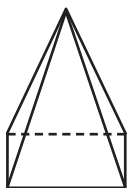
2. Draw the reflection of this shape.



3. Draw a 90 degree angle.

4. Name a polygon with 3 sides.

5.



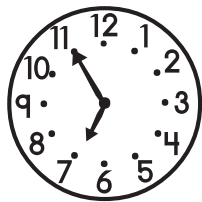
This is a \_\_\_\_\_.

How many? faces \_\_\_\_\_ edges \_\_\_\_\_ vertices \_\_\_\_\_

# THURSDAY

## Measurement

1. What time is it?

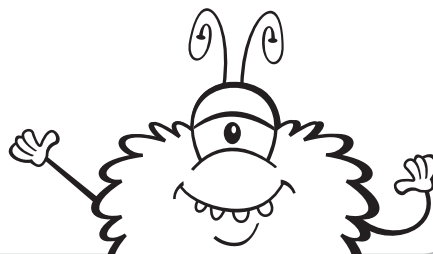


2. Draw a triangle with an area of  $10\text{cm}^2$ .

3.  $125\text{ mm} = \underline{\hspace{2cm}}\text{ cm}$

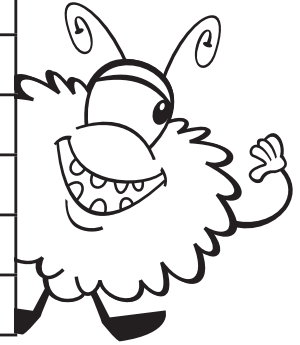
4. What unit of measurement would you use to find the length of your arm?

5. How would you find the perimeter of your classroom?



The Mill Valley Hockey Association published the final results for this season.

Team	Overall Points
Tigers	23
Sharks	16
Mustangs	21
Hornets	18
Cobras	24
Scorpions	34
Barracudas	20



1. What is the range of the data? \_\_\_\_\_
2. What is the median number of points? \_\_\_\_\_
3. What is the mean number of points? \_\_\_\_\_
4. How many more points did the Cobras score than the Sharks? \_\_\_\_\_
5. How many fewer points did the Hornets have than the Scorpions? \_\_\_\_\_

**BRAIN STRETCH**

A tub of ice cream has 4L in it.

- a) If each person at the Smith family BBQ gets a 200 ml scoop, how many people can be served by one tub?
- b) If there are 35 people at the BBQ, how many tubs of ice cream should they purchase?